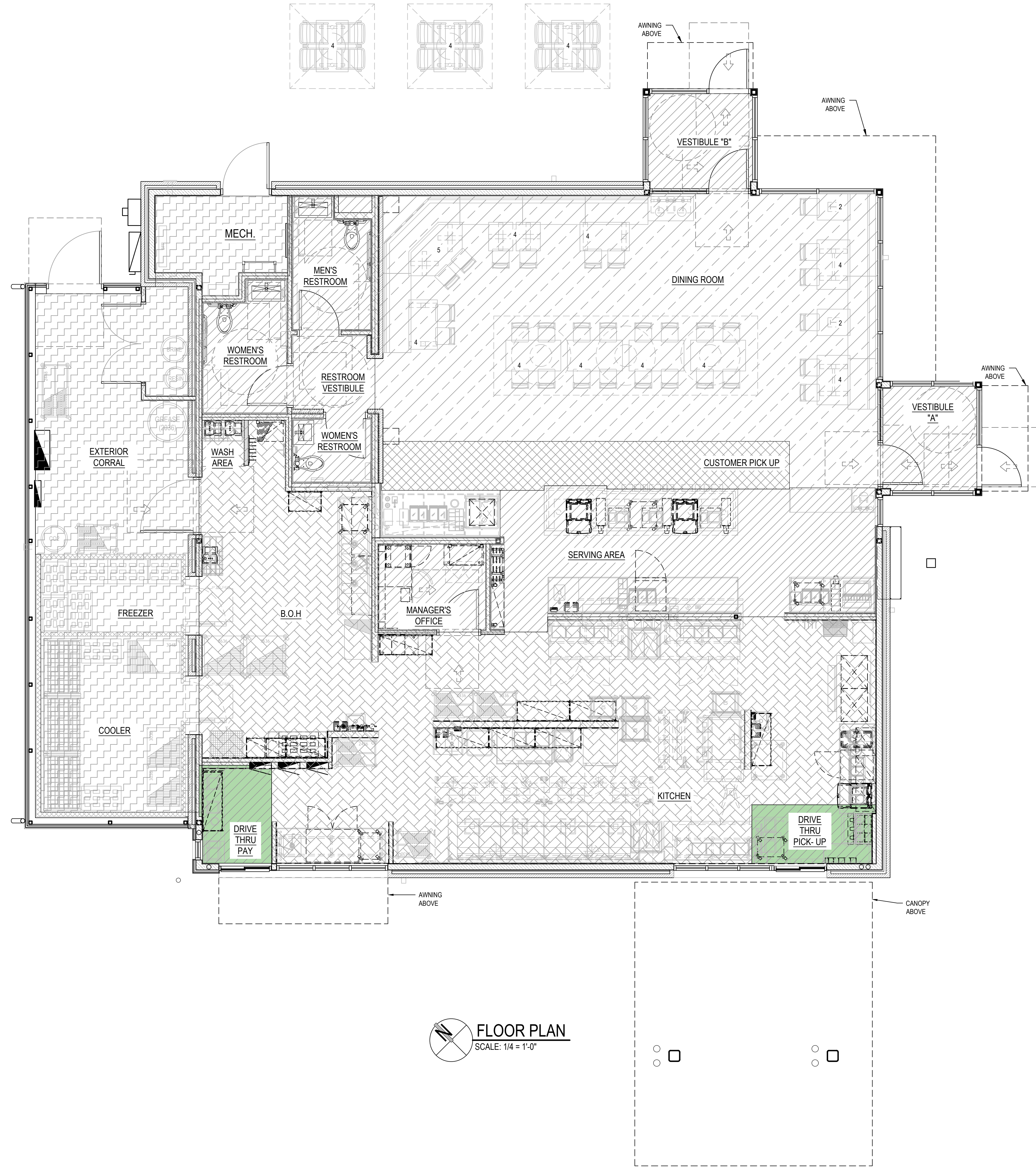


**■ OCCUPANT LOAD:**  
**TABLE 1004.5 MAXIMUM FLOOR AREA ALLOWANCES PER OCCUPANT**

FUNCTION OF SPACE	LOAD FACTOR	AREA CALCULATION	ALLOWABLE OCCUPANCY
ASSEMBLY - DINING FIXED SEAT	1:1		45
ASSEMBLY - PATIO SEATING	1:1		12
ASSEMBLY - STANDING SPACE	5 NET	111 S.F.	23
BUSINESS	150 GROSS	754 S.F.	6
COMMERCIAL KITCHEN	200 GROSS	1,028 S.F.	6
ACCESSORY STORAGE	300 GROSS	552 S.F.	2
<b>TOTAL OCCUPANTS:</b>			<b>94</b>

**AREA LEGEND**

SYMBOL	FUNCTION OF SPACE
	ASSEMBLY, FIXED SEATING DINING ROOM
	ASSEMBLY, FIXED SEATING PATIO
	ASSEMBLY, STANDING AREA
	BUSINESS
	KITCHEN, COMMERCIAL
	ACCESSORY STORAGE
	INTERIOR DRIVE-THRU AREA - 81 S.F.

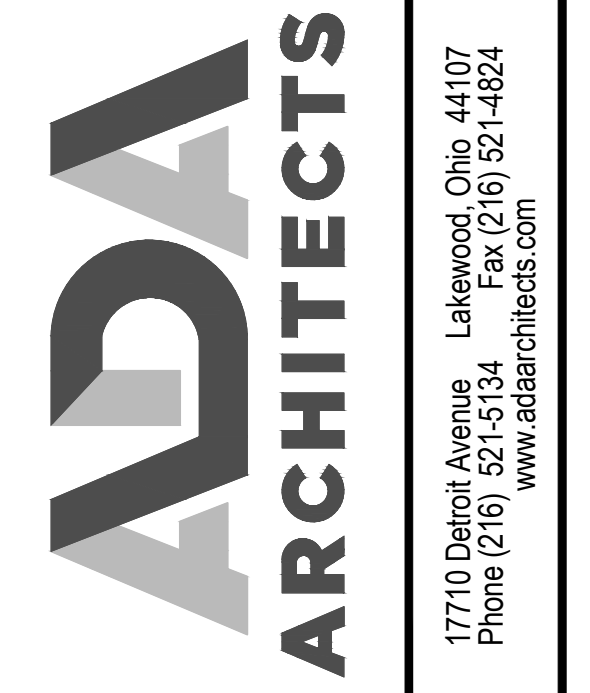


**FLOOR PLAN**  
 SCALE: 1/4" = 1'-0"



Restaurant Support Office  
 6800 Bishop Road, Plano, TX 75024  
 Tele: 972-769-3100 Fax: 972-769-3101

STORE:  
**RAISING CANE'S RESTAURANT**  
 494 LINCOLN ST.  
 WORCESTER, MA 01605  
 PROTOTYPE: P6-V-Av  
 SCHEME: B  
 RESTAURANT #RC1233



17710 Detroit Avenue Lakewood, Ohio 44107  
 Phone (216) 521-5134 Fax (216) 521-4824  
 www.adaarchitects.com

THIS DOCUMENT CONTAINS INFORMATION PROPRIETARY TO ADA ARCHITECTS, INC. UNAUTHORIZED USE OF THESE DOCUMENTS IS EXPRESSLY PROHIBITED UNLESS AGREED UPON IN WRITING.

ENGINEER INFORMATION:

**SHEET REVISIONS**

#	DATE	TYPE
1		
2		
3		
4		
5		
6		
7		
8		
9		
10		

**FIXTURE PLAN**  
 DATE: 11/4/2024  
 JOB NO. 24164

**FP-1**  
 SHEET NO.



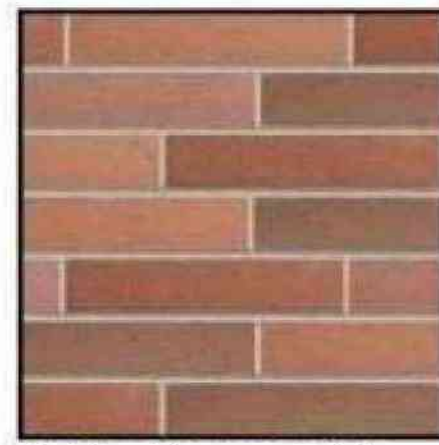
# MATERIAL FINISHES



Reclaimed Metal Panel:  
Vintage car hood occurs  
at face of the tower  
element only.



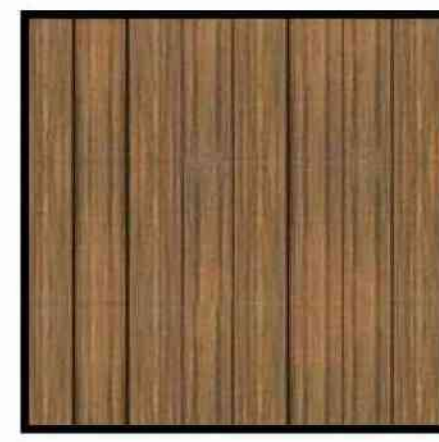
Aluminum storefront  
system.  
Finish: Anodized Black



Belden Norman Brick  
Masonry Medium Range,  
smooth, iron spot. Mortar to  
match Solomon products  
10h, weathered horizontal  
strike. Vertical joints are  
flush.



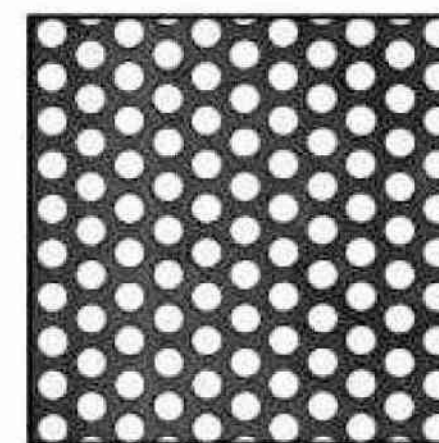
Standing Seam  
Metal Roof



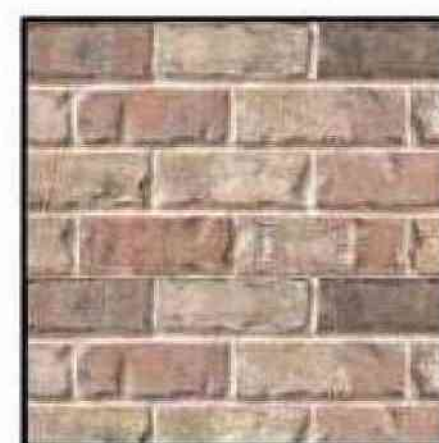
Composite Lumber Trex  
Cladding  
Color: Havana Gold



Panelized Fiber Cement  
Cladding  
Nichiha: Vintage Cedar



MCNICHOLS Perforated  
Metal Panel  
Powder Coat: Black



Boral: "Alamo" modular  
brick, mortar to match  
Solomon products 10h,  
light buff sack rub finish.



P-10: Super Spec 23  
Sherwin Williams Paint



4 FRONT ENTRY ELEVATION  
EL-1 SCALE: 3/16" = 1'-0"



3 SIDE ELEVATION  
EL-1 SCALE: 3/16" = 1'-0"



2 REAR ELEVATION  
EL-1 SCALE: 3/16" = 1'-0"



1 DRIVE-THRU ELEVATION  
EL-1 SCALE: 3/16" = 1'-0"



Restaurant Support Office  
6800 Bishop Road, Plano, TX 75024  
Tele: 972-769-3100 Fax: 972-769-3101

STORE:  
RAISING CANE'S  
RESTAURANT  
494 LINCOLN STREET  
WORCESTER, MA 01605  
PROTOTYPE: P6-V-Av  
SCHEME: A/B  
RESTAURANT #RC1233



Lakewood, Ohio 44107  
17710 Detroit Avenue  
Phone (216) 521-5134  
Fax (216) 521-4824  
www.adaarchitects.com

THIS DOCUMENT CONTAINS INFORMATION  
PROPRIETARY TO ADA ARCHITECTS, INC.  
UNAUTHORIZED USE OF THESE DOCUMENTS IS  
EXPRESSLY PROHIBITED UNLESS AGREED UPON IN  
WRITING.

ENGINEER INFORMATION:

SHEET REVISIONS

#	DATE	TYPE
1		
2		
3		
4		
5		
6		
7		
8		
9		
10		

EXTERIOR  
ELEVATIONS

DATE: 09/30/24

JOB NO. 24164

EL-1  
SHEET NO.